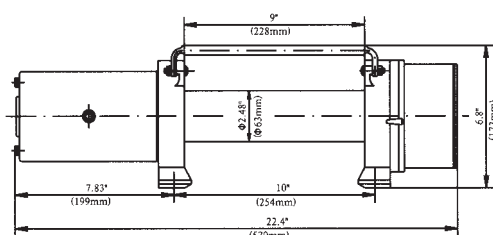
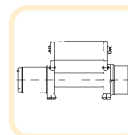
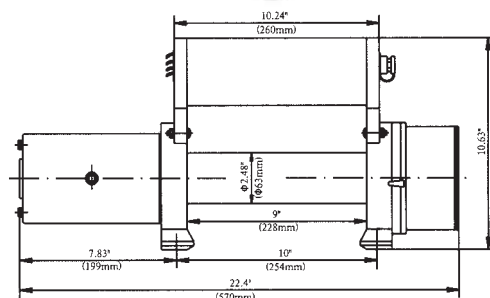
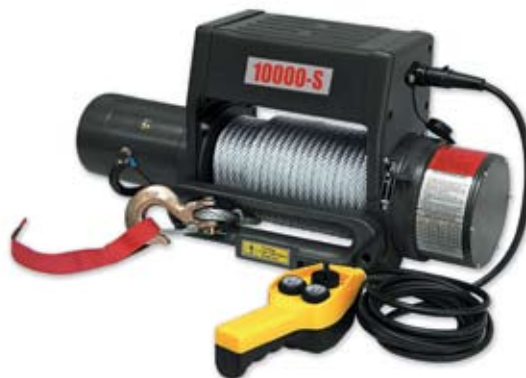


VITLA

ELEKTRIČNA VITLA



05441,05442,05443



05444,05445,05446

Šifra	Snaga povlačenja (LBS)	Snaga povlačenja (KGS)	Motor: Serijski	Omjer okretaja	Kabel (mm x L)	Dimezije bubnja (mm)	Dimenzije (mm)	Rupe za montažu
05441	8000	3629	2.7kw/3.6hp(12V) 3kw/4.0hp(24V)	210:1 150:1	ø8mmx29m	ø63x228	570x180x173	254x114.3
05442	8000	3629	2.7kw/3.6hp(12V) 3kw/4.0hp(24V)	210:1 150:1	ø8mmx29m	ø63x228	570x180x270	254x114.3
05443	9000	4082	2.7kw/3.6hp(12V) 3kw/4.0hp(24V)	294:1 210:1	ø8.3mmx29m	ø63x228	570x180x173	254x114.3
05444	9000	4082	2.7kw/3.6hp(12V) 3kw/4.0hp(24V)	294:1 210:1	ø8.3mmx29m	ø63x228	570x180x270	254x114.3
05445	10000	4536	2.7kw/3.6hp(12V) 3kw/4.0hp(24V)	294:1 210:1	ø9.2mmx26m	ø63x228	570x180x173	254x114.3
05446	10000	4536	3kw/4.0hp(12V) 3.3kw/4.5hp(24V)	294:1 210:1	ø9.2mmx26m	ø63x228	570x180x270	254x114.3

VITLA



ELEKTRIČNO VITLO

ŠIFRA	05530
NAPON	12V
SNAGA POVLAČENJA	2041KG
ČELIČNO UŽE	6.4mm x 15.2mm



ELEKTRIČNO VITLO

ŠIFRA	SNAGA POVLAČENJA	Maks.velič broda	Maks.težina broda	Brzina	Dužina čel. užeta	Napon	Dimezije	N.T. (kg)
05480	907kg	18FT	2250kg	6Feet/min.	30Ft	12Volts	9-1/2"x7-1/2"x10"	8.5