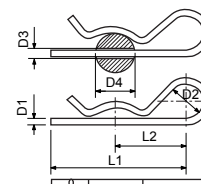




### BETA OSIGURAČ

Šifra	Dimenzije						Težina kg/100kom
	D1 mm	D2 mm	L1 mm	L2 mm	D3 mm	D4 mm	
27501	2	10	50	25	2.5	9 - 14	0.33
27502	3	18	60	28	3.5	10 - 16	1.35
27503	4	20	60	30	4.5	16 - 20	2.84
27504	5	24	85	40	6.0	20 - 28	5.3
27505	6	30	105	50	7.0	28 - 40	10
27506	7	30	105	50	8.0	28 - 45	12.7
27507	8	28	110	55	9.0	30 - 45	17.1

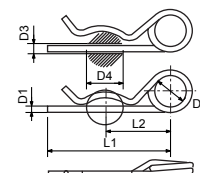
Materijal: Čelik C45  
Završna obrada: Galvanizirano



### BETA OSIGURAČ DUPLI DIN 11024

Šifra	Dimenzije						Težina kg/100kom
	D1 mm	D2 mm	L1 mm	L2 mm	D3 mm	D4 mm	
27521	2	10	50	25	2.5	8-14	0.23
27522	3	16	62	32	3.5	14-20	0.91
27523	4	23	78	44	4.5	17-24	1.67
27524	5	26	92	50	5.5	18-30	3.38
27525	6	30	120	70	6.5	24-36	6.15
27526	7	30	130	72	8	26-40	8.54
27527	8	30	130	76	9	24-40	12.2

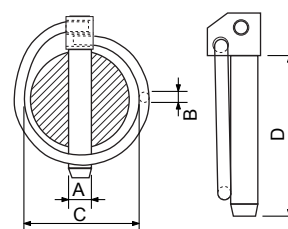
Materijal: Čelik C45  
Završna obrada: Galvanizirano



### PREKLOPNI OSIGURAČ

	Bolcna	O ring	Unutarnja širina O - ringa	Dužina bolcne	Težina kg/100kom
	a	b	c	d	kg
	mm	mm	mm	mm	
27551	4.5	3.4	34	42	2
27552	6	3.4	41	42	2.8
27553	7	3.4	41	42	3
27554	8	3.4	41	42	3.5
27555	9	3.4	41	42	3.8
27556	10	3.4	41	42	4.4
27557	11	3.4	41	42	4.6

Materijal: Mekani čelik  
Završna obrada: Elektro cinčano



### "S" KUKA

Šifra	Veličina	D	A	C	Težina
	mm	mm	mm	mm	kg/100kom
27251	3	3	25	3	0.37
27252	4	4	35	4.5	0.8
27253	5	5	45	6.5	1.55
27254	6	6	55	7	2.6
27255	7	7	65	8	4.34
27256	8	8	75	10	6.6
27257	10	10	105	11	15.05
27258	12	12	120	13.5	21.2

Materijal: C15

