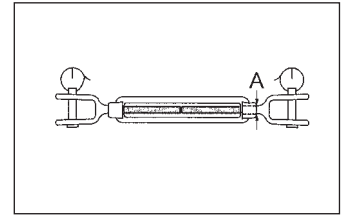


Šifra	Veličina		A
	mm	inch	mm
24001S	6	1/4	6.35
24002S	8	5/16	7.94
24003S	10	3/8	9.53
24004S	12	1/2	12.7
24007S	16	5/8	15.9
24010S	19	3/4	19.1

**ZATEZNICA U.S. TIP
OKO - OKO**

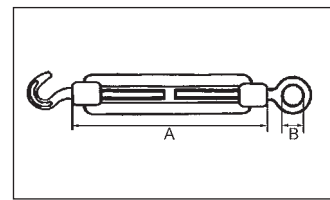
AISI :304 / 316



Šifra	Veličina		A
	mm	inch	mm
24501S	6	1/4	6.35
24502S	8	5/16	7.94
24503S	10	3/8	9.53
24504S	12	1/2	12.7
24505S	16	5/8	15.9
24506S	19	3/4	19.1

**ZATEZNICA U.S.
VILICA - VILICA**

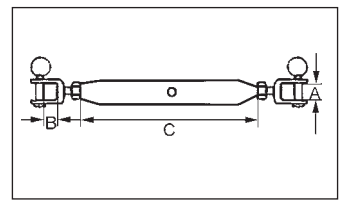
AISI: 304 / 316



Šifra	Veličina mm	A	B
		mm	mm
24151S	5	70	8
24152S	6	110	9
24153S	8	110	10
24154S	10	125	14
24156S	12	125	16
24157S	14	140	18
24158S	16	170	22
24159S	20	200	24

**NATEZNI VIJAK DIN 1480
KUKA - OKO**

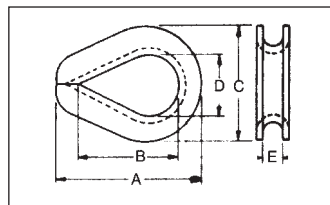
AISI:304 / 316



Šifra	Veličina mm	A	B	C
		mm	mm	mm
24100S	M5	6	9	80
24101S	M6	7.5	10	95
24102S	M8	10	11	105
24103S	M10	12	13	125
24104S	M12	14	20	150
24105S	M16	16	26	190
24106S	M20	20	30	210

**ZATEZNICA CIJEVNA
VILICA - VILICA**

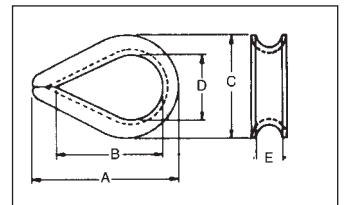
AISI: 304 / 316



Šifra	Uže (IN.)	Dimenzije (in.)				
		A	B	C	D	E
23301S	1/4	2.19	1.63	1.50	.88	.28
23302S	5/16	2.50	1.88	1.81	1.06	.34
23303S	3/8	2.88	2.13	2.13	1.13	.41
23305S	1/2	3.63	2.75	2.75	1.50	.53
23307S	5/8	4.25	3.25	3.13	1.75	.66
23308S	3/4	5.00	3.75	3.81	2.00	.78
23309S	7/8	5.50	4.25	4.25	2.25	.94
23310S	1	6.13	4.50	4.94	2.50	1.06

**JEZGRA - TEŠKA
U. S TIP**

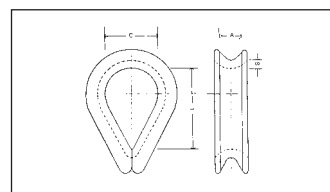
AISI:304 / 316



ITEM NO	Uže (IN.)	Dimenzije (in.)				
		A	B	C	D	E
23201S	1/8	1.94	1.31	1.06	.69	.16
23202S	3/16	1.94	1.31	1.06	.69	.22
23203S	1/4	1.94	1.31	1.06	.69	.28
23204S	5/16	2.13	1.50	1.25	.81	.34
23205S	3/8	2.38	1.63	1.47	.94	.41
23206S	1/2	2.75	1.88	1.75	1.13	.53
23207S	5/8	3.50	2.25	2.38	1.38	.66
23208S	3/4	3.75	2.50	2.69	1.63	.78

**JEZGRA
U.S. TIP**

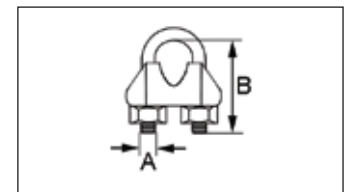
AISI:304 / 316



Šifra	A	B	C
	mm	mm	mm
23051S	3	10	16
23052S	4	11	17
23053S	5	13	20
23054S	6	16	25
23055S	7	18	28
23056S	8	20	32
23057S	10	26	40
23058S	12	28	45
23059S	14	34	56
23060S	16	37	62

**JEZGRA
EUROPSKI TIP**

AISI :304 / 316



Šifra	Uže mm	Veličina inch	A	B
			mm	mm
22101S	3	1/8	4	16.60
22102S	5	3/16	5	19.65
22103S	6	1/4	5	23.65
22104S	8	5/16	6	28.85
22105S	10	3/8	8	35.00
22106S	12	1/2	8	37.00
22108S	14	9/16	10	48.24
22109S	16	5/8	12	52.50

STEZALJKA DIN 741

AISI:304 / 316