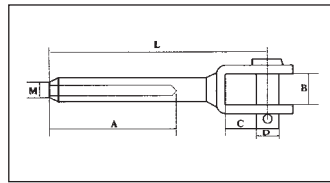




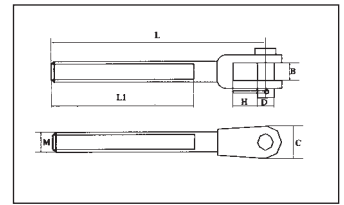
PRIBOR

INOX PRIBOR AISI 304 / 316



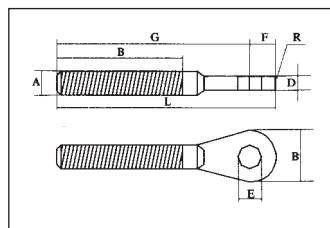
Šifra	Uže-φ	L	A	B	C	D
mm	mm	mm	mm	mm	mm	mm
28401S	2.5	55	24	6	9	5.2
28402S	3	65	32	7.5	10	5.2
28403S	4	77	40	10	11	6.2
28404S	5	88	57	12	13	8.7
28405S	6	106	63	14	20	9.7
28406S	7	116	70	14.5	22	12.6
28407S	8	145	85	16	26	14.6
28408S	9	150	87	17	30	16.5
28409S	10	150	89	17	30	16.5

ZAVRŠETAK ČEL. UŽETA SA VILICOM
AISI: 304 / 316



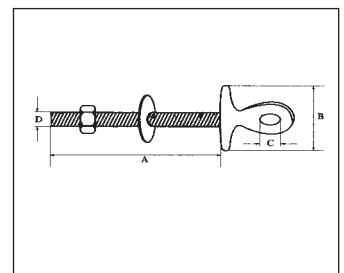
Šifra	Veličina	L	L1	H	B	C	D
mm	mm	mm	mm	mm	mm	mm	mm
28411S	M5	60.5	41	9	6	12	5.2
28412S	M6	72.5	50	10	7.5	14	6.2
28413S	M8	79	55	11	10	17.5	8.4
28414S	M10	96	67	13	12	20	9.4
28415S	M12	118.5	81	20	14	26	12.3
28416S	M14	130	89	22	14	26	12.3
28417S	M16	154	104	26	16	36	16
28418S	M20	172	116	30	20	43	19

ZAVRŠETAK SA VILICOM I NAVOJEM
AISI: 304 / 316



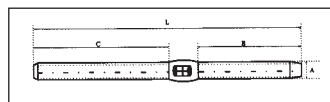
Šifra	Navoj(A)	B	C	E	F	G	H	L	R
mm	mm	mm	mm	mm	mm	mm	mm	mm	mm
28421S	M5	12	3	5.5	7	63	41	70	7
28422S	M6	14	4	6.5	7.5	65	47	72.5	7.5
28423S	M8	17	5	8.5	8.5	78	57	86.5	8.5
28424S	M10	22	6	10.5	12	90	63	102	12
28425S	M12	25	8	13	13	110	80	123	13
28426S	M14	28	9	13	14	124	90	138	14
28427S	M16	31	10	14.5	16	133	100	149	16

ZAVRŠETAK SA OKOM I NAVOJEM
AISI: 304 / 316



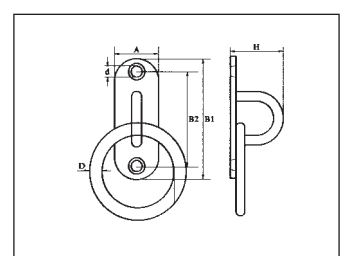
Šifra	Veličina	A	B	C	D
mm	mm	mm	mm	mm	mm
28431S	M6	45	15	6	6
28432S	M6	60	25	6	6
28433S	M8	70	30	8	8
28434S	M8	80	40	8	8

ZAVRŠETAK SA OKOM I PLOČICOM
AISI: 304 or 316



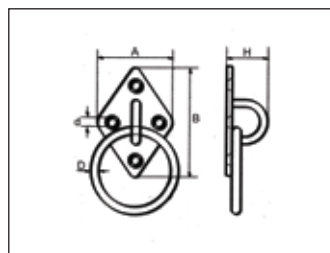
Šifra	Navoj	Uže-φ	L	A	B	C
mm	mm	mm	mm	mm	mm	mm
28441S	M5	2.5	70	5.5	24	38
28442S	M6	2.5	72	6.3	24	40
28443S	M6	3	80	7.5	32	40
28444S	M6	4	95	7.5	40	44
28445S	M8	4	102	9	40	52
28446S	M8	5	120	9	57	52
28447S	M10	5	130	12.5	57	63
28448S	M10	6	136	12.5	63	63
28449S	M12	6	142	14.2	63	68
28450S	M12	7	148	14.2	70	68
28451S	M14	7	160	16	70	79
28452S	M14	8	165	16	76	79
28453S	M16	8	175	17.8	76	89
28454S	M16	9	190	17.8	89	89

ZAVRŠETAK ČEL. UŽETA SA NAVOJEM
AISI: 304 / 316



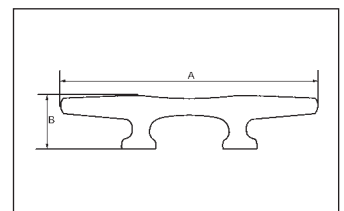
Šifra	A	B1	B2	H	d	Ring
mm	mm	mm	mm	mm	mm	mm
28461S	15	45	35.5	20	12	5×30
28462S	20	60	46	25	17	6×40
28463S	26	80	60	32	21	8×50
28464S	32	100	73	38	26	9×60

BITVA SA O RINGOM
AISI: 304 / 316



Šifra	A	B	H	d	Ring
mm	mm	mm	mm	mm	mm
28471S	37	59	22	4.2	5×30
28472S	40	64	26	5.2	6×45
28473S	50	80	23	5.2	8×45

BITVA SA O RINGOM
AISI: 304 / 316



Šifra	Veličina	A	B
inch	inch	inch	inch
28481S	5	5	1-1/8
28482S	6	6	1-1/4
28483S	8	8	1-5/8
28484S	10	10	1-7/8
28485S	12	12	2-3/16

BITVA
AISI: 304 / 316