



# DIZALICE

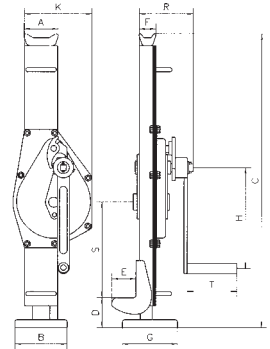
## DIZALICE KOLSKE VINTE

### DIZALICA KOLSKA VINTA

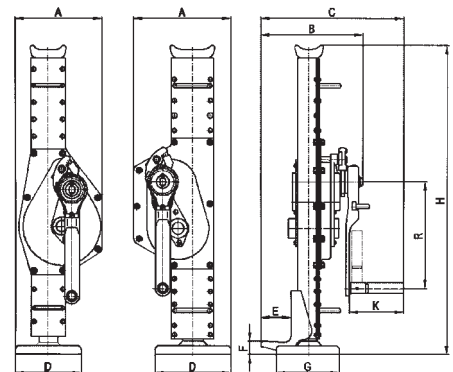
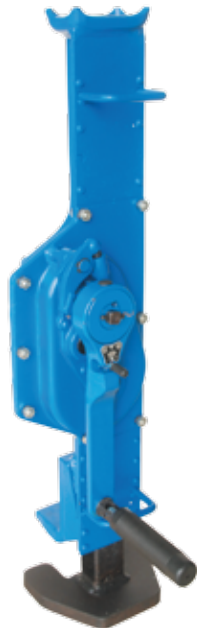


Prema standardu DIN7355 i ASME B30.1-2004

Šifra		03157	03158	03159	03160	03163	03164
Nosivost	t	1.5	3	5	10	16	20
Ispitana sila	KN	22	44.1	73.5	147	196	245
Sila na ručki za maks. podizanje	N	280	350	400	580	640	640
Dimenzije mm	A	81	83	108	124	135	135
	B	100	130	140	140	150	150
	C	600-900	735-1090	730-1075	800-1190	800-1120	860-1180
	D	60-360	70-425	80-425	100-490	95-415	100-420
	E	55	60	71	86	80	80
	F	46	45	68	76	85	85
	G	110	138	170	170	180	180
	H	225	249	249	300	300	380
	K	147	168	190	250	275	275
	R	119	129	146	168	210	220
S	175	245	218	210	208	208	
T	113	130	130	239	250	250	



### DIZALICA KOLSKA VINTA - NISKA



Prema standardu DIN7355 i ASME B30.1-2004

Šifra	Nosivost t	Ispitana sila kN	Sila za maks. podizanje N	Visina dizanja (mm)	Visina u najnižem položaju		Dimenzije (mm)							Težina kg	
					gornja papuča	donja papuča	A	B	C	D	E	G	K		R
03165	1.5	18.4	150	300	725	20	187.5	205	272.5	155	60	130	113	225	17
03166	3	36.8	280	300	725	25	204.5	220	317	155	65	130	127	250	22
03167	5	61.3	280	300	725	25	230	241	337	180	70	150	127	250	29.5
03168	10	122.5	560	300	800	30	284	308	513	200	85	170	247.5	300	50
03169	16	196	640	300	800	40	316.5	345	540	230	85	195	250	300	69
03170	20	245	640	300	860	40	316.5	360	555	230	85	195	250	380	80

DIZALICE