

6. EL. DIZALICE, VITLA I VILIČARI El. hoists, forklifts

6.2. Ručni paletni viličari

Viličar paletni električni 1500 kg tip PT-E RX-lift

Semi electric pallet truck type PT-E RX-lift

Nosivost (kg) Capacity of SFH10	1500
Duljina vilica L (mm) Fork length	1150
Radiusus okretanja (mm) Radius of gyration	1274/1330
Težina (kg) Weight	123

- integrirana litijska baterija
- BMS kontrola rada baterije
- kretanje: AC motor
- podizanje: ručno

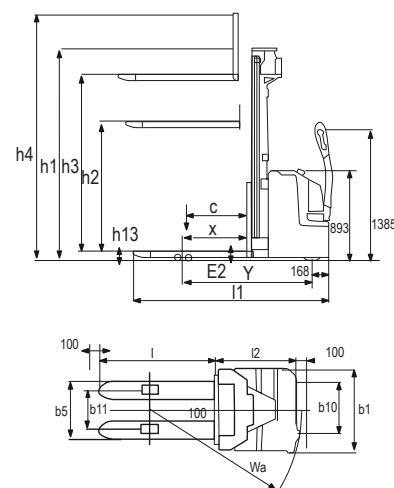


2.1 2.2 CE

Viličar ručni paletni visokopodizni, električno dizanje tip PS-L RX-lift

Electric stacker type PS-L RX-lift

Model	PS12L	PS16L	PS20L
Nosivost Q (kg) Load capacity	1200	1600	2000
Udaljenost od centra utovara c (mm) Load centre distance c	600	600	600
centar osi x (mm)	647	647	647
Baza kotača y Wheelbase y	1248	1293	1429
Veličina prednjih kotača (mm) Tyre size, front	230X70	230X70	230X70
Veličina stražnjih kotača (mm) Tyre size, rear mm	85X70	85X70	85X70
Broj kotača prednji/ stražnji Wheels, number front/rear	1X1/4	1X1/4	1X1/4
b10 (mm)	522	522	522
b11 (mm)	390/505	390/505	390/505
h1 (mm)	2308	2108	2228
h2 (mm)	1760	1520	1520
h3 (mm)	3600	4600	4600
h4 (mm)	4088	5080	5208
h14 (mm)	850/1385	850/1385	850/1385
h13 (mm)	90	90	90
l1 (mm)	1919	1964	2100
l2 (mm)	769	814	950
b1 (mm)	820	820	820
s/e/l (mm)	60/180/1150	60/180/1150	60/180/1150
b5 (mm)	570/685	570/685	570/685
Wa (mm)	1440	1510	1640
Brzina dizanja (mm/s) Lifting speed	6,0/6,0	5,7/6,0	5,4/6,0
Brzina spuštanja (mm/s) Lowering speed	0,10/0,17	0,20/0,14	0,20/0,14
Kočnica parkiranja Parking brake	elektromagnetska	elektromagnetska	elektromagnetska
Napon baterije, nom. kapacitet K5 (V/ah) Battery Volatge, nominal capacity K5	24/180	24/270	24/350



- EN ISO 3691-1, ISO/TS 3697-7, EN 1175-1
- ergonomska ručka
- kretanje: AC motor
- podizanje: hidraulični pogon